

# Microsoft Dynamics NAV 2016

A business solution from Microsoft that is quick to implement, easy to use, and that has the power to support your business ambitions



## Quick to implement

Works natively with CRM  
Works natively with Azure SQL  
Extensions  
Test automation suite



## Easy to use

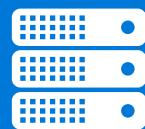
Windows 10 Universal App  
Usability enhancements



## Power to support

Finance enhancements  
Document management  
Workflow  
E-everything  
Power BI

On-premises

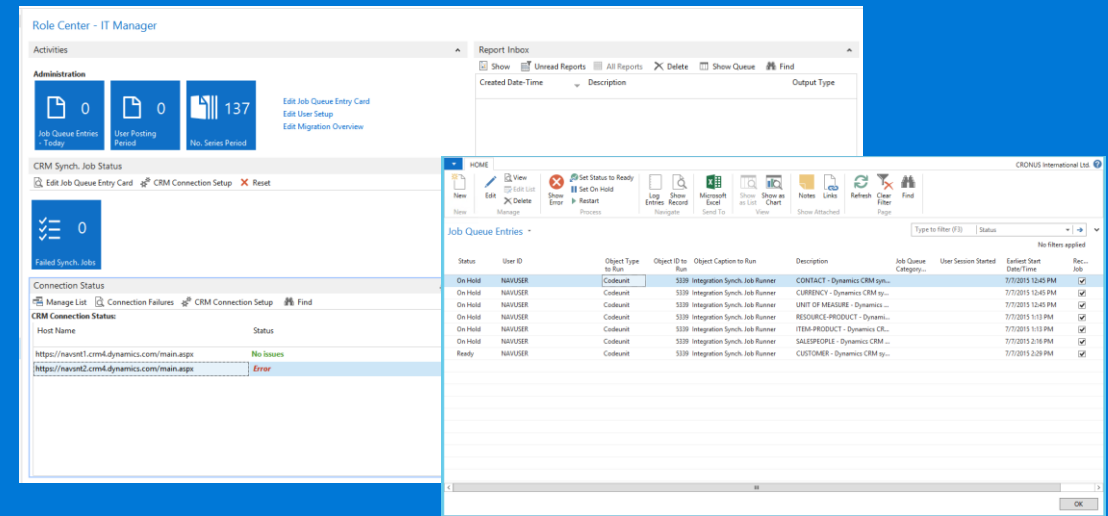


In the cloud

# What's new in Microsoft Dynamics NAV 2016?

## Works natively with CRM

Introducing a new, direct Microsoft Dynamics CRM connection that enables an optimal, seamless experience for our customers in the lead-to-cash process when they utilize Microsoft Dynamics CRM for customer engagement and Microsoft Dynamics NAV for order processing and financials.



### General

**WHY** consider an optimized lead-to-cash process that works natively with Microsoft Dynamics CRM in Microsoft Dynamics NAV 2016?

*Learn why and when to consider Microsoft Dynamics NAV and Microsoft Dynamics CRM additions as the distribution of your horizontal solution.*

### CRM integration

**WHAT** does it mean to work natively with Microsoft Dynamics CRM in Microsoft Dynamics NAV 2016?

**▶ HOW DO I** run integration setup in Microsoft Dynamics NAV 2016?

**▶ HOW DO I** integrate Microsoft Dynamics CRM in Microsoft Dynamics NAV 2016?

**▶ HOW DO I** work natively with Microsoft Dynamics CRM in Microsoft Dynamics NAV 2016?

**W HOW TO – DEMO** Setting up and working natively with Microsoft Dynamics CRM in Microsoft Dynamics NAV 2016

**W HOW TO** work natively with Microsoft Dynamics CRM in Microsoft Dynamics NAV 2016



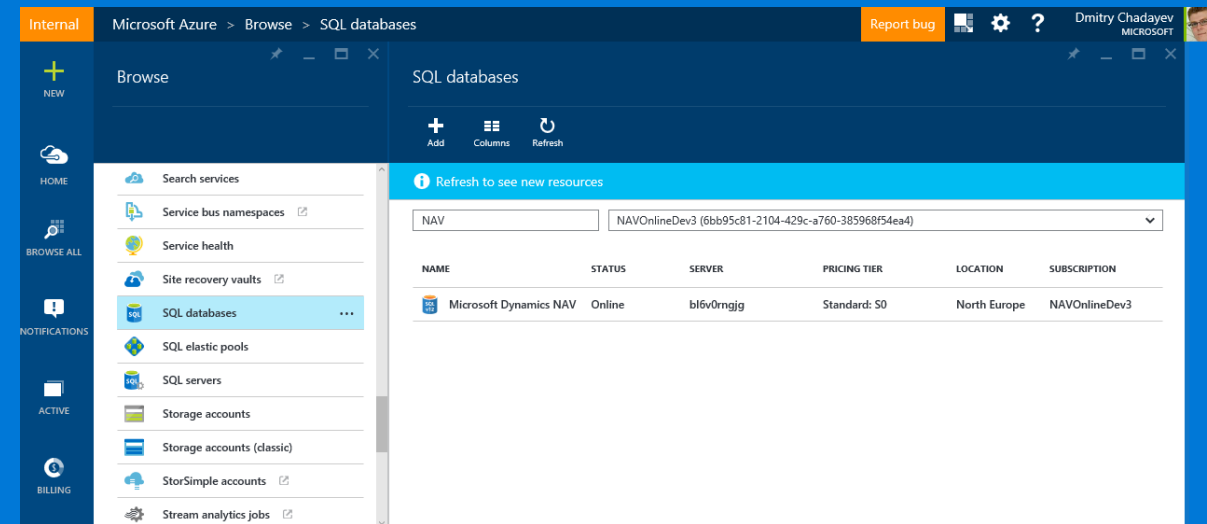
**BLOG POST** Works Natively with Microsoft Dynamics CRM. Introduction to Microsoft Dynamics NAV and CRM integration

# What's new in Microsoft Dynamics NAV 2016?

## Works natively with Azure SQL

Microsoft Dynamics NAV 2016 can be configured to use Azure SQL as a relational database-as-a-service, eliminating maintenance and reducing costs.

Azure SQL database, with its predictable performance, guarantees matching the scale and pace of your business environment. It provides industry-leading 99.99% availability, built-in redundancy, resilience and security features, point-in-time recovery, and attractive pricing.



### General

**WHY** consider using Azure SQL in Microsoft Dynamics NAV 2016?

*Learn why you should consider Azure SQL in Microsoft Dynamics NAV 2016 and how you can benefit from it.*

### Works natively with Azure SQL

**WHAT** is Azure SQL and how can you use it in Microsoft Dynamics NAV 2016?

### Administration

**WHAT** is the performance profiling of Microsoft Dynamics NAV 2016 running on Azure SQL?

**HOW DO I** set up Microsoft Dynamics NAV 2016 to work with Azure SQL database?

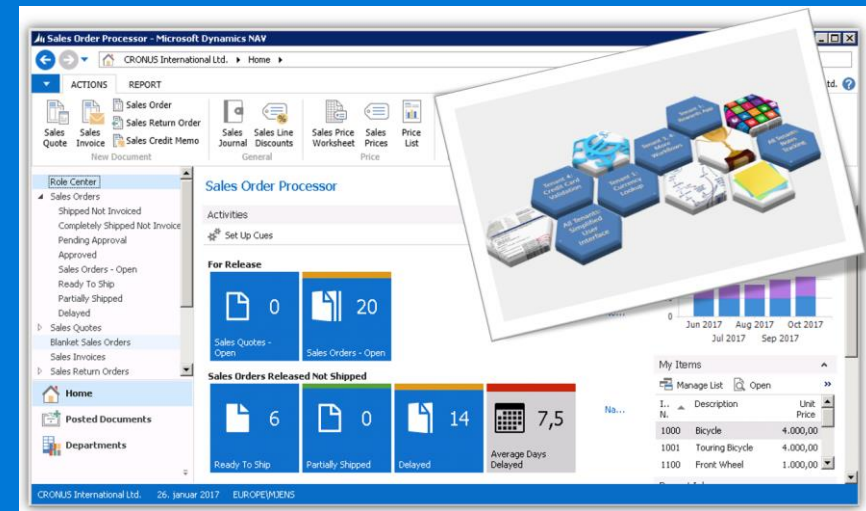
**BLOG POST** Azure SQL database and Microsoft Dynamics NAV 2016

**COMING SOON:**  
**BLOG POST** Microsoft Dynamics NAV 2016 and Azure SQL row version

# What's new in Microsoft Dynamics NAV 2016?

## Extensions

Introducing a new way to customize the application without modifying the underlying C/AL code and metadata. Distributed via an "extension package" file, such customizations can be easily installed, upgraded, or uninstalled. For enabling changes of application behavior without code modification, we have also introduced the concept of events in the C/AL programming language.



### General

**WHY** use Extensions in Microsoft Dynamics NAV 2016?

*Why and when should you consider Extensions as the distribution of your horizontal solution? And when should you stick to the classical way? Learn about the differences and the possibilities.*

### Extensions

**WHAT** is the new model for creating and deploying Extensions to Microsoft Dynamics NAV 2016?

**HOW DO I** create and package Extensions in Microsoft Dynamics NAV 2016?

**HOW DO I** deploy and manage Extensions in Microsoft Dynamics NAV 2016?

**HOW TO - DEMO** develop and deploy Extension packages for Microsoft Dynamics NAV 2016?

### Events

**WHAT** Programming with C/AL events in Microsoft Dynamics NAV 2016

**HOW DO I** subscribe to the C/AL database, page, and system events in Microsoft Dynamics NAV 2016?

**HOW DO I** use events in Microsoft Dynamics NAV 2016?

**BLOG POST** Integration events in Microsoft Dynamics NAV 2016

**BLOG POST** introduction to extensions in Microsoft Dynamics NAV 2016

**COMING SOON: BLOG POST** Introducing events in C/AL in Microsoft Dynamics NAV 2016

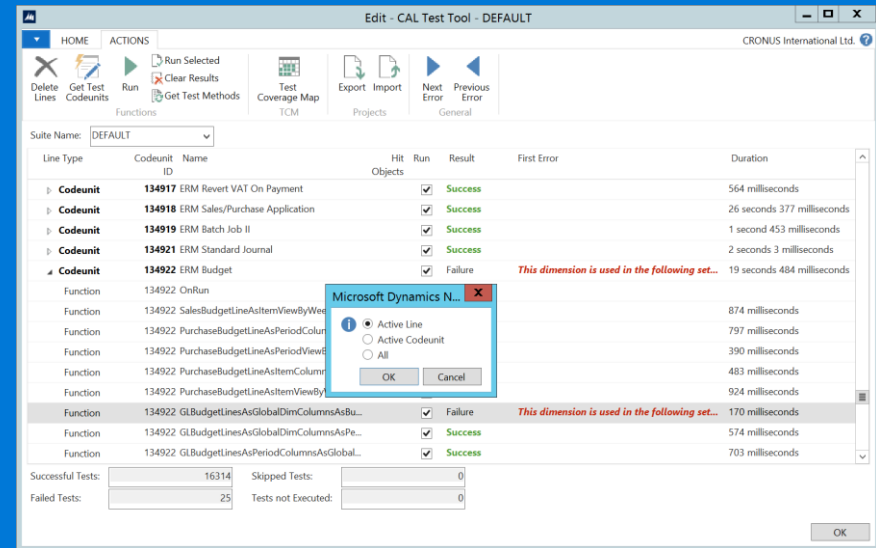
**COMING SOON: BLOG POST** Why are Extensions in Microsoft Dynamics NAV 2016 so cool?

# What's new in Microsoft Dynamics NAV 2016?

## Test automation suite

When partners develop new business logic it needs to be tested. Microsoft Dynamics NAV 2016 includes a suite of automated tests for partners' solutions and customer implementations that reduce or even eliminate manual testing. The suite includes repeatability, reducing man-hours and improving efficiency.

The test automation suite adds testing capabilities to the development environment, the C/AL language, and the runtime platform.



## General

**WHY** use the test automation suite in Microsoft Dynamics NAV 2016?

*Microsoft Dynamics NAV 2016 adds one more feature to the partner productivity suite series. With the test automation suite, your testers and QA specialists become more productive. Learn how to reduce testing time and keep risk of regression at a minimal level.*

**WHAT** is the test automation suite in Microsoft Dynamics NAV 2016?

## Shipped tests

**HOW DO I** make sure my development doesn't break existing functionality in Microsoft Dynamics NAV 2016?

**HOW TO** use C/AL Test Tool in Microsoft Dynamics NAV 2016?

**HOW TO** use the Code Coverage Tool in Microsoft Dynamics NAV 2016?

**HOW TO** create a Test Runner Codeunit in Microsoft Dynamics NAV 2016

## Testing add-ons

**HOW DO I** automate the daily test execution in Microsoft Dynamics NAV 2016?

**HOW TO** use ASSERTERROR to catch expected error in Microsoft Dynamics NAV 2016

**HOW TO** use Handler functions to interact with UI in Microsoft Dynamics NAV 2016

**HOW TO** use libraries during writing test in Microsoft Dynamics NAV 2016

**BLOG POST** Test Isolation in the application test automation suite in Microsoft Dynamics NAV 2016

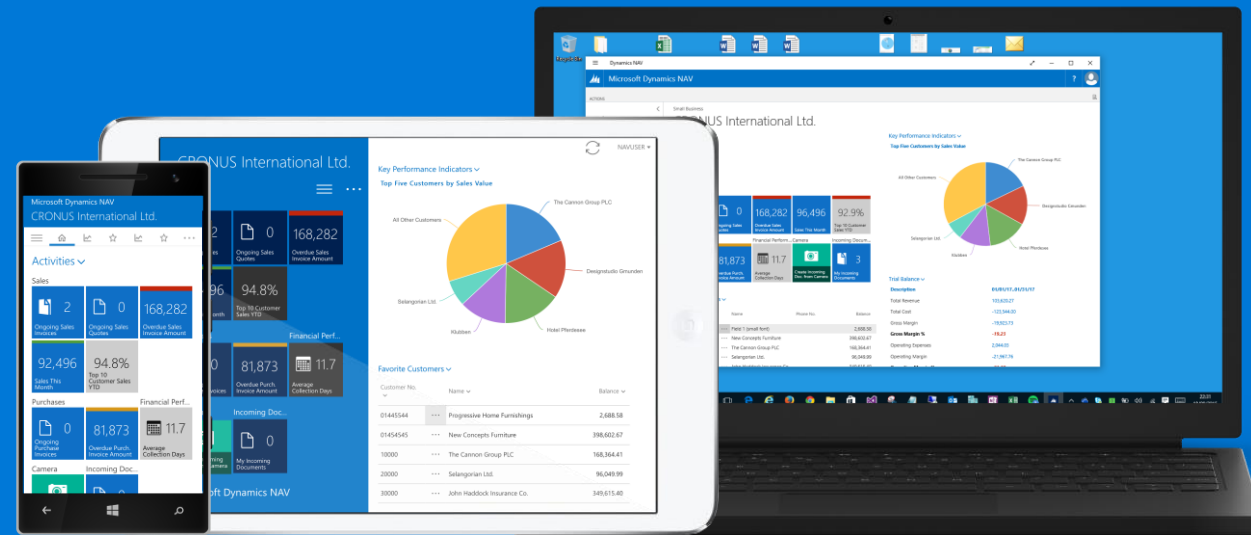
**COMING SOON:** **BLOG POST** use libraries in Microsoft Dynamics NAV 2016?

# What's new in Microsoft Dynamics NAV 2016?

## Universal App on all your devices

Experience Microsoft Dynamics NAV 2016 on the broadest range of devices ever, with a single app from Microsoft for your smartphone, tablet, notebook, 2-in-1, and desktop computer.

The Microsoft Dynamics NAV 2016 Universal App delivers a familiar role-tailored experience in a fast and fluid interface, optimized for touch, and for keyboard and mouse. Designing or customizing pages for use across devices has never been easier and now includes support for camera and location.



### General

**WHY** should you consider using the Universal App for Microsoft Dynamics NAV 2016?

*Learn about why moving your users to the Universal App is a smart choice for business owners, developers, and end-users alike.*

**WHAT** you need to know about the Universal App for Microsoft Dynamics NAV 2016 in 90 seconds

### Experience

**HOW DO I** get started with the Universal App in Microsoft Dynamics NAV 2016?

**HOW TO – DEMO** Using Microsoft Dynamics NAV 2016 on your smartphone

**HOW TO – DEMO** Using the Universal App for Microsoft Dynamics NAV 2016

### Design & develop

**HOW DO I** design pages for use on all devices in Microsoft Dynamics NAV 2016?

**HOW DO I** develop using a device camera and location in Microsoft Dynamics NAV 2016?

**HOW DO I** implement deep linking to pages or records in Microsoft Dynamics NAV 2016?

#### COMING SOON:

**HOW DO I** get started developing for all devices in Microsoft Dynamics NAV 2016?

#### COMING SOON:

**HOW TO** make a mock-up of your page design for Microsoft Dynamics NAV 2016 with this powerful template



**BLOG POST** Announcing the Universal App for Microsoft Dynamics NAV 2016



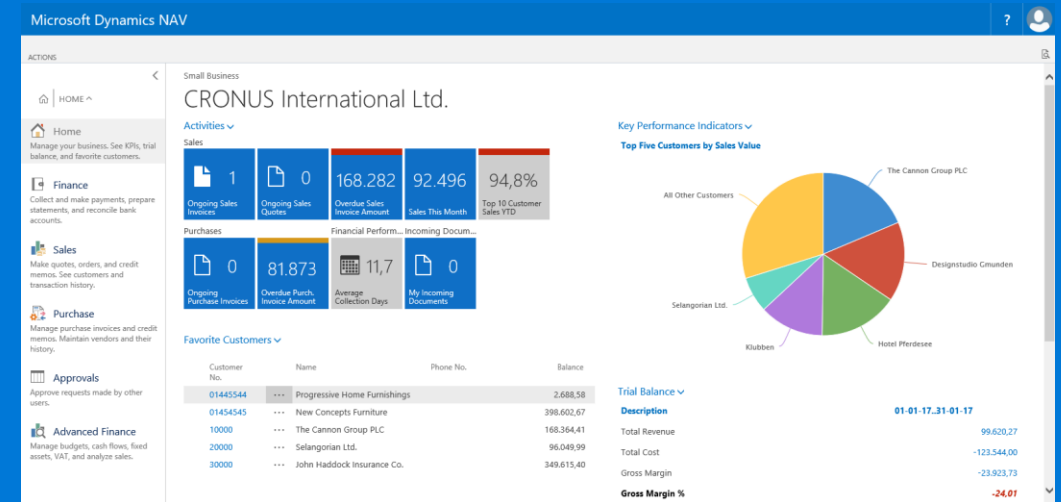
**COMING SOON: SUPPORT** Visit our customer help site for the Microsoft Dynamics NAV 2016 Universal App

# What's new in Microsoft Dynamics NAV 2016?

## Web client enhancements

Microsoft Dynamics NAV 2016 includes over 60 enhancements to the Web client.

With a renewed focus on simplicity, productivity, and performance, the Microsoft Dynamics NAV 2016 Web client now includes popular features such as cross-column search, collapsible Fast Tabs, freeze pane, search-as-you-type, language selection, change company, and so much more.



### General

**WHY** should you consider switching to the Web client in Microsoft Dynamics NAV 2016?

Check out the major highlights from our broad set of enhancements to the Web client in this short presentation.

**WHAT** has changed in the Microsoft Dynamics NAV 2016 Web client - the highlights

### Experience

**WHAT** A list of client enhancements for Microsoft Dynamics NAV 2016?

**COMING SOON:**  
**HOW TO – DEMO** Web client enhancements in Microsoft Dynamics NAV 2016

### Design & develop

**WHAT** new capabilities are available for developers designing user experiences in Microsoft Dynamics NAV 2016?



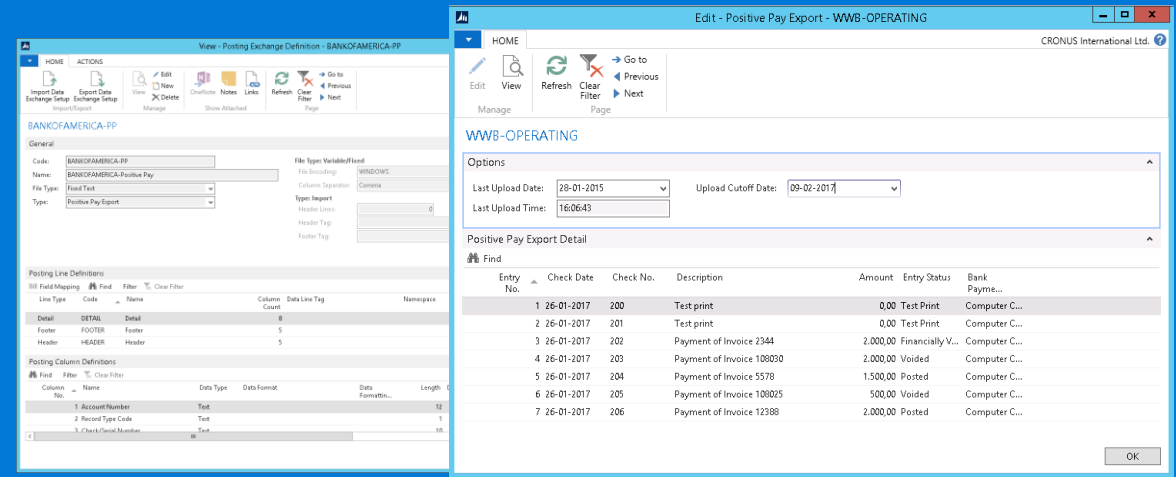
#### COMING SOON:

**BLOG POST** Announcing the Web client enhancements in Microsoft Dynamics NAV 2016

# What's new in Microsoft Dynamics NAV 2016?

## Finance enhancements

Finance is an important piece of a business solution. In Microsoft Dynamics NAV 2016, new and improved features save time, improve the ease of data entry, and build new financial functionality into the core product, enhancing the user experience for accountants and bookkeepers.



## Reporting enhancements

**WHY** consider using the reporting enhancements in Microsoft Dynamics NAV 2016?

*The finance enhancements in Microsoft Dynamics NAV 2016 provide core financial functionality important to businesses.*

**WHAT** are the finance enhancements in Microsoft Dynamics NAV 2016?

## Deferrals

**WHY** consider using deferrals in Microsoft Dynamics NAV 2016?

**HOW DO I** defer revenues and expenses in Microsoft Dynamics NAV 2016?

**HOW TO – DEMO** Deferring revenues and expenses in Microsoft Dynamics NAV 2016

## Posting preview and positive pay

**WHY** consider using the posting preview in Microsoft Dynamics NAV 2016?

**WHY** consider using positive pay in Microsoft Dynamics NAV 2016?

**HOW DO I** use the posting preview in Microsoft Dynamics NAV 2016?

**HOW TO – DEMO** Posting preview in Microsoft Dynamics NAV 2016

**HOW TO – DEMO** Positive pay in Microsoft Dynamics NAV 2016

**HOW DO I** process positive pay in Microsoft Dynamics NAV 2016?

## Word forms and document totals

**WHY** consider using Word forms in Microsoft Dynamics NAV 2016?

**WHY** consider using document totals in Microsoft Dynamics NAV 2016?

**HOW TO – DEMO** Modifying, assigning, and processing email for Word forms in Microsoft Dynamics NAV 2016

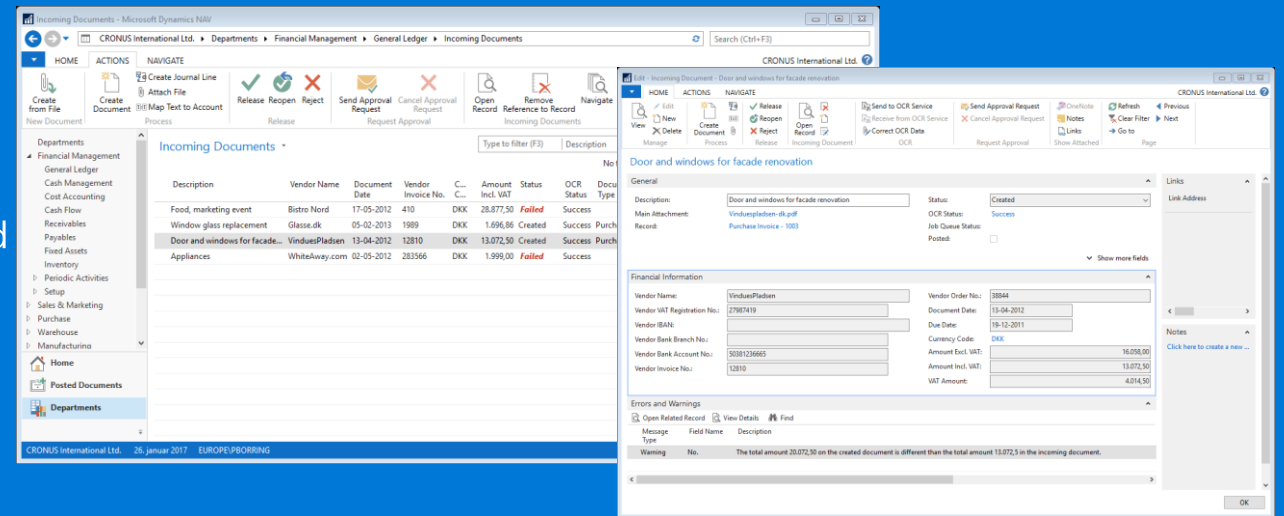
**COMING SOON:**  
**HOW DO I** use Word forms in Microsoft Dynamics NAV 2016?



# What's new in Microsoft Dynamics NAV 2016?

## Document management

Microsoft Dynamics NAV 2016 includes several enhancements for managing incoming documents. Now you can capture, store and find incoming documents using document capture or an optical character recognition (Lexmark Invoice Capture Service) service, creating purchase invoices or general journal line drafts automatically.



## General

**WHY** consider using document management in Microsoft Dynamics NAV 2016?

*Learn about the major highlights from our broad set of enhancements to incoming document support in this short presentation.*

## Document management

**WHAT** is document management in Microsoft Dynamics NAV 2016?

**HOW TO – DEMO** Document Management and Lexmark Invoice Capture Service for Microsoft Dynamics NAV 2016

**HOW DO I** create and use a workflow for incoming documents in Microsoft Dynamics NAV 2016?

## Document capture (Lexmark ICS)

**WHAT** is Lexmark Invoice Capture Service for Microsoft Dynamics NAV 2016?

**HOW DO I** create and invoice using the Lexmark ICS for Microsoft Dynamics NAV 2016?

**HOW DO I** create and use workflow in Microsoft Dynamics NAV 2016?

# What's new in Microsoft Dynamics NAV 2016?

## Workflows

Microsoft Dynamics NAV 2016 workflows enable you to model real-life business processes such as best practices or industry-standard practices. Workflows in Microsoft Dynamics NAV 2016 focus on three main building blocks:

- Approvals for almost anything, by direct manager or by groups
- Notification to tell users to take some kind of action
- Process automation to execute a process routine and make the system calculate something or perform an action

EDIT - WORKFLOW - SOAPW - SALES ORDER APPROVAL WORKFLOW

SOAPW · Sales Order Approval Workflow

Code SOAPW


Description Sales Order Approval Workflow

Enabled

Workflow Steps

When Event	On Condition	Then Response
Approval of a sales document is requested.	Document Type: Order, Status: Open	(+) Set document status to Pending Approval.
An approval request is approved.	Pending Approvals: 0	Release the document.
An approval request is approved.	Pending Approvals: >0	Send approval request for the record and create a notification.
An approval request is rejected.	<Always>	(+) Reject all approval requests for the record and create a notification.
A sales document request is canceled.	Document Type: Order, Status: Pendin...	(+) Cancel all approval requests for the record and create a notification.
An approval request is delegated.	<Always>	Send approval request for the record and create a notification.

## General

 **WHY** consider using the workflows in Microsoft Dynamics NAV 2016?

*Learn about workflow functionality in Microsoft Dynamics NAV 2016 and how you can benefit from it.*


 **WHAT** are workflows in Microsoft Dynamics NAV 2016?

## Developer guides


 **HOW DO I** perform a two person approval fro printing checks with Microsoft Dynamics NAV 2016?


 **HOW DO I** set up a workflow in Microsoft Dynamics NAV 2016?

 **HOW TO – DEMO** Building your own Workflow in Microsoft Dynamics NAV 2016

 **HOW TO – DEMO** Adding a purchase invoicing Workflow in Microsoft Dynamics NAV 2016

 **HOW TO – DEMO** Setting up multiple namespace support in XMLP ports in Microsoft Dynamics NAV 2016

 **BLOG POST** Upgrade considerations for document approvals in Microsoft Dynamics NAV 2016

 **BLOG POST** Accounting services role center for the phone client in Microsoft Dynamics NAV 2016

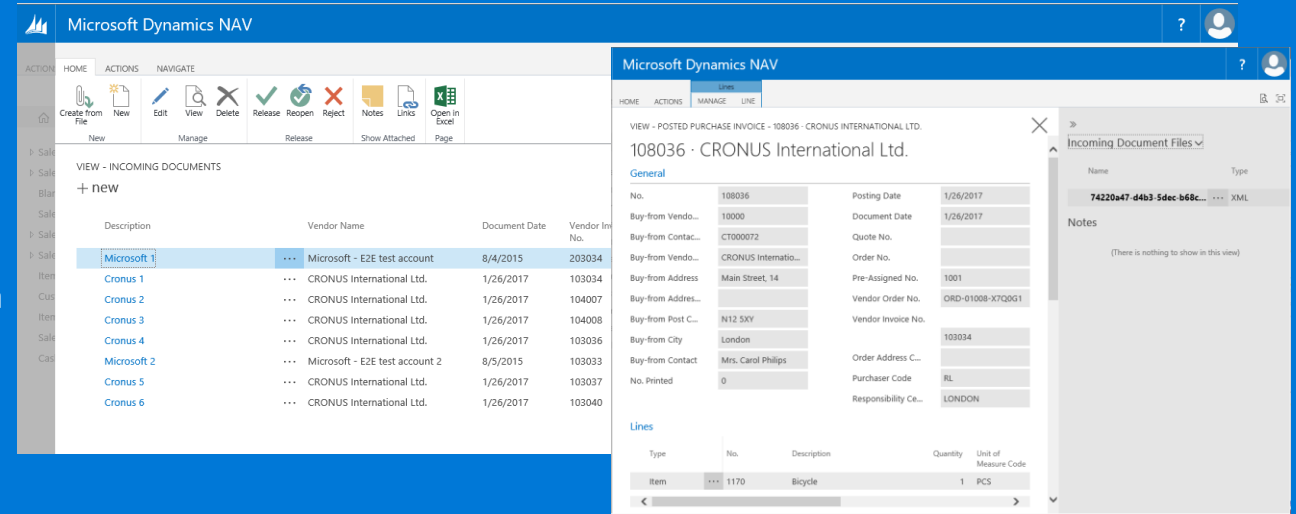
 **BLOG POST** Approval types in Workflow in Microsoft Dynamics NAV 2016

 **BLOG POST** Email logging with exchange online in Microsoft Dynamics NAV 2016

# What's new in Microsoft Dynamics NAV 2016?

## E-everything

Microsoft Dynamics NAV 2016 includes several enhancements for integration with services. You can send and receive Pan-European Public Procurement Online (PEPPOL) invoices across a document exchange service and get currency exchange rates automatically from an exchange rate service.



## General

**WHY** consider using electronic invoices in Microsoft Dynamics NAV 2016?

*Send and receive PEPPOL invoices out-of-the-box, and build on the new capabilities to support additional formats.*

## E-invoice

**WHAT** is electronic invoicing in Microsoft Dynamics NAV 2016?

**HOW DO I** set up Microsoft Dynamics NAV to send electronic documents?

**HOW DO I** set up Microsoft Dynamics NAV to use the Document Exchange Service for Sending and Receiving Electronic Invoices?

### COMING SOON:

**HOW DO I** send a PEPPOL invoice in Microsoft Dynamics NAV 2016?

### COMING SOON:

**HOW DO I** receive a PEPPOL invoice in Microsoft Dynamics NAV 2016?

**HOW TO – DEMO** Sending PEPPOL invoices in Microsoft Dynamics NAV 2016

**HOW TO – DEMO** Receiving PEPPOL invoices in Microsoft Dynamics NAV 2016

**HOW TO – DEMO** Sending and receiving electronic documents through Tradeshift in Microsoft Dynamics NAV 2016

## E-service

**WHY** consider using currency exchange rate services in Microsoft Dynamics NAV 2016?

**WHAT** is the currency exchange rate service in Microsoft Dynamics NAV 2016?

**HOW DO I** set up a currency exchange rate service in Microsoft Dynamics NAV 2016?

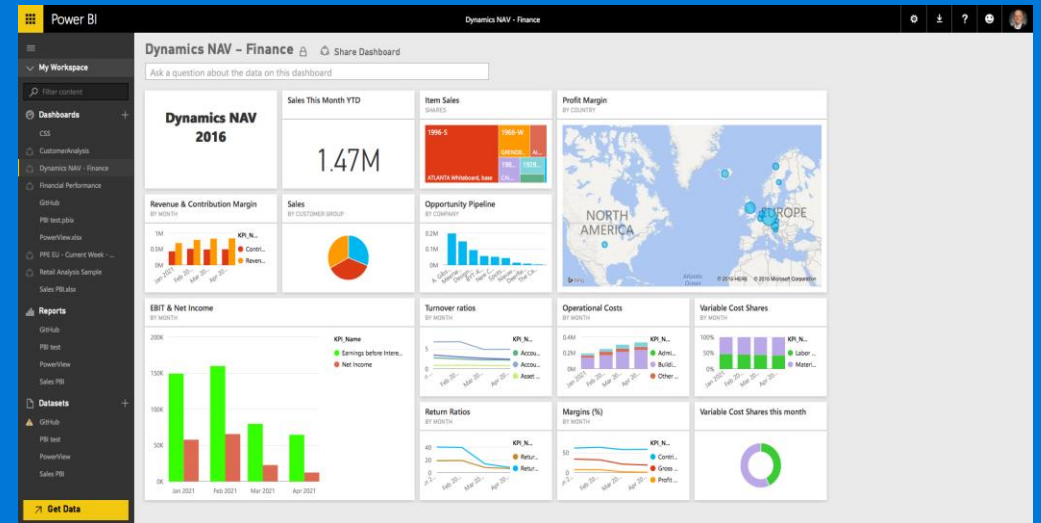
**HOW TO – DEMO** Setting up the currency exchange rate service in Microsoft Dynamics NAV 2016

# What's new in Microsoft Dynamics NAV 2016?

## Power BI

Microsoft Dynamics NAV 2016 includes an entirely new integration with Microsoft Power BI.

Connect to your Microsoft Dynamics NAV instance and immediately have access to business performance insights into your business. The app is designed specifically for small and mid-sized business (SMB) owners, managers, and executives to provide details about customers, sales, and finance. The dashboard and reports are built on top of a fully featured model, allowing you to explore and analyze your data as you need. And automatic refresh ensures you're always seeing the latest data.



## General

**WHY** consider using a Power BI Dashboard with Microsoft Dynamics NAV 2016?

*What can you learn about your business from your Power BI Business Performance Dashboard?*

## Business KPIs

**WHAT** is the Power BI Business Performance Dashboard in Microsoft Dynamics NAV 2016?

**COMING SOON:**  
**HOW DO I** use my Microsoft Dynamics NAV 2016 Business Performance Dashboard at PowerBI.com?

## Enhancements

**HOW TO – DEMO** Activating your Microsoft Dynamics NAV 2016 Business Performance Dashboard at PowerBI.com

**BLOG POST** PowerBI.com and Microsoft Dynamics NAV 2016

# Supporting materials

## Why

'Why' documents provide more insights into what the business value might be for you and your customers

## What

'What' documents explain the architectural design of added features

## How

'How' materials provide you with information on how to use or demo the feature by walking you through specific scenarios

## Tips

In the 'Tips' documents ,we are sharing implementation considerations and/or best practices

# Microsoft Dynamics

Learn more at <http://aka.ms/NAVGetReady>